



## Foos 200 – Assembly Instructions

### GS-A-DC-1 / GS-A-DC-1-BK

Thank you for purchasing a Shelti product. All of us at Shelti want to be completely satisfied with your Foos 200 game, so feel free to contact us for help with the assembly of your product, Shelti parts or other information you may require.

#### Tools Required:

- 2- Allen Wrenches (included)
- Open End Wrench (included)
- Hammer
- Phillips screwdriver
- Level

### Step -1

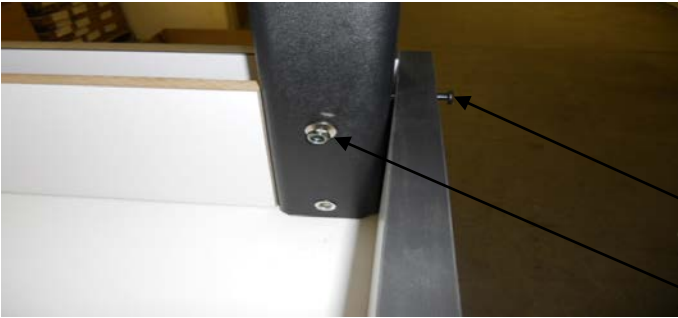
Remove the following parts from the Pro Foos Box.

Description	Part Number	Quantity
Right Leg	GS-SSR-0	2
Left Leg	GS-SSL-0	2
Leg Levelers	201-0074-0	4
Playfield	GS-PFA-0	1
Side Apron	GS-SAA-0	2
End Apron/Ball Box Assembly	GS-EAA-0	2
Goalie Rod Assembly (3 Holes Shorter in Length)	ES-GRA-1	2
5- Man Rod Assembly (5 Holes)	ES-5RA-1	2
3- Man Rod Assembly (3 Holes Longer in Length)	ES-3RA-1	2
2- Man Rod Assembly (2 Holes)	ES-2RA-1	2
Rubber Bumpers	203-0002-0	16
Red Soccer Man	201-0064-0	13
Black Soccer Man	201-0068-0	13
Spirol Pin	205-0006-0	26
Score Posts	201-0006-0	4
Score Rods	205-0007-0	2
Red Score Beads	003-0002-0	5
Black Score Beads	003-0003-0	5
#8 x 2" Wood Screws	304-0005-0	4
Spirol Pin Punch	210-0012-0	1
Super Lube Tube	210-0002-0	1
Balls	201-0007-0	3
Rod Block	102-0070-0	1
Field Trim	AS-PTA-0	2
Foosball Bearings	201-0011-1	16

## Step -2

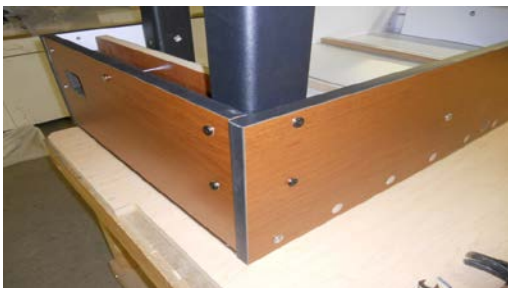
### Leg Assembly

- Unbolt legs from the bottom board inside the cabinet with a 9/16" wrench and remove.
- Place legs in the corners as below. Please note that there is a left and right legs so the holes need to be aligned correctly. The (2) legs with the welded piece of metal at the top of the leg should be placed on the ball return side. 0



### Step – 2

Install The Four Legs. Note Legs Come In Right and Left. Install As Picture. Also Note That The Bolts Without Any Nuts Are Used Through The Side Of The Game Into The Leg & The Bolts With The Nuts Are Installed Through The End Of The Game Into The Leg

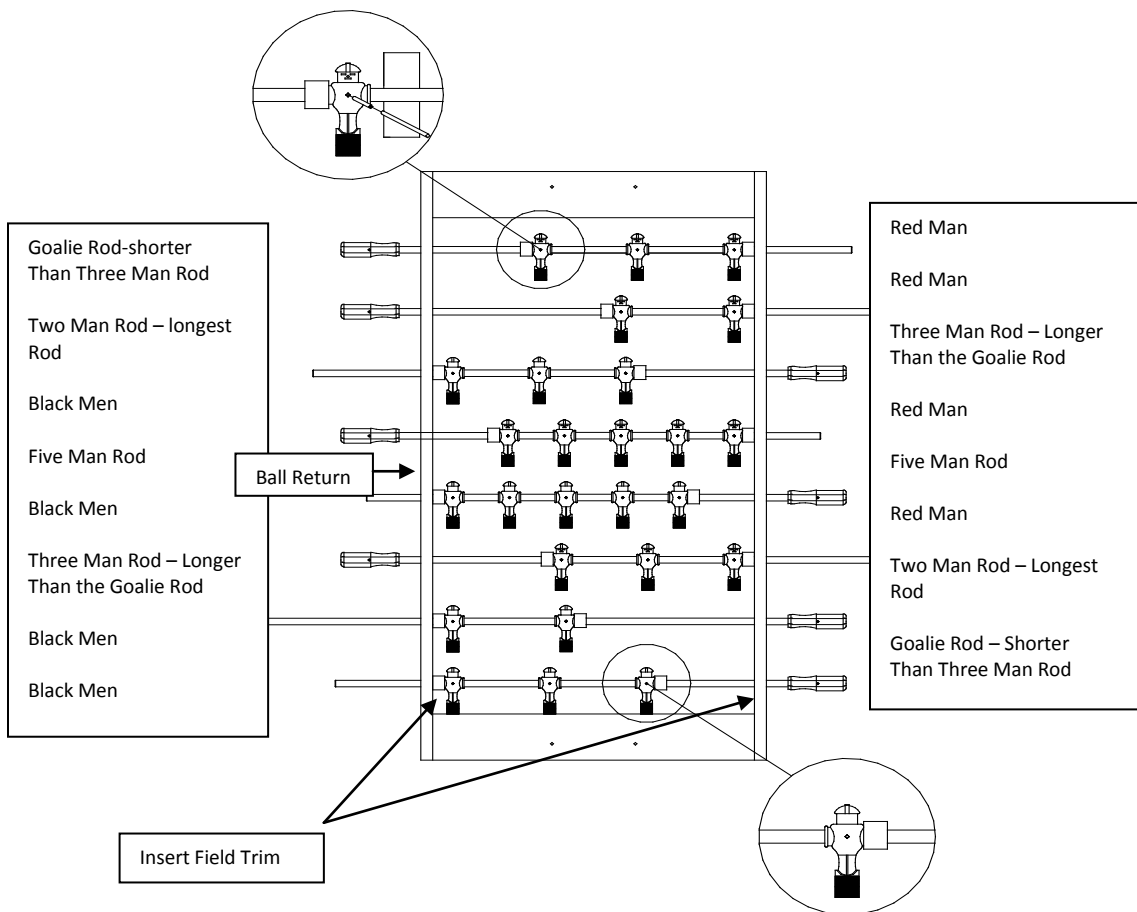


### Step – 3

Once The Four Legs Are Installed The Game Can Be Flipped Over & The Rods & Men Can Be Assembled To The Game.

## STEP 4 – Rods, Bumper and Men Assembly

- Once the table legs are secure, (using two people) pick the table up and turn it over onto its legs.
- Locate the five man rods.... These two rods will be located in the center of the game as illustrated on next page . Note... The men are designed with a slight press fit onto the rods in order to maximize playability.
  - Place the five man rod through the bushing in one wall... Slide on the first bumper making sure that the larger hole in the bumper is away from the wall and toward the man. This will allow the bumper to snap onto the shoulder of the outside man.
  - Slide on the five man and the second bumper and slide the rod through the bushing hole in the far wall... Note that the red and black men face in opposite directions as shown in the illustration (on the next page). In some cases you may need to add a small amount of lubricant inside the shoulder hole of the man to ease the sliding of the man onto the rod.
  - Align each man over a hole in the rod and drive in a spirol pin. Note: place the rod block under the rod before hammering in the spirol pins.
  - Snap the bumper onto the shoulder of the outside men. This can be done by pulling/pushing the men into the side walls until the bumpers are securely seated.
- Repeat these operations for the 3-man, 2-man, and goalie rods. Note: the 3-man and goalie rods both have three holes. The goalie rod is the shorter rods.

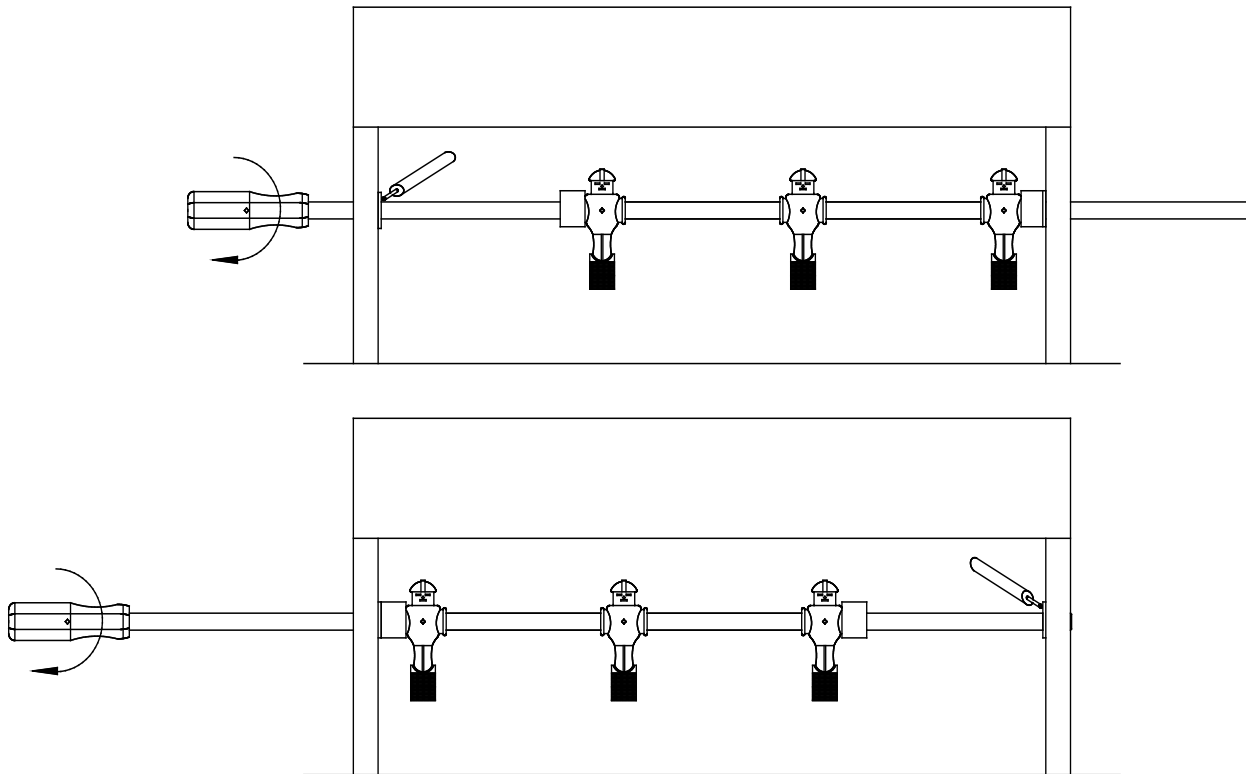


## Step 6-Level the Game

- Turn the leg levelers in or out of the leg until the ball rolls true in the play surface.
- For more precise leveling, use a level. Place the level horizontally on the playing surface pointing toward the goal openings. Be sure all the levelers are screwed all the way in as a starting point. Turn the leg levelers up equally on one end until you are horizontally level. Then turn your level 90 degrees so it is pointing toward the ball server holes. Now turn the levelers up on side of the table until you are vertically level.

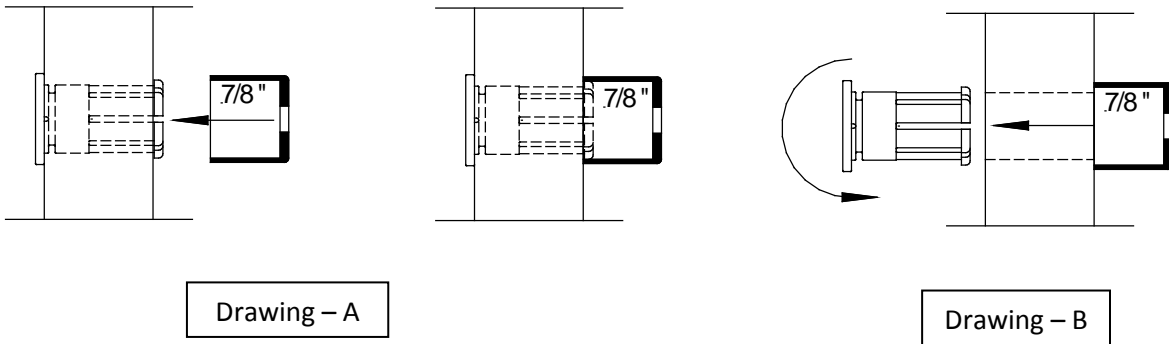
## Step 7- Lubricate the Rods / Bearings

- Push the rod away from you until the bumper hits the opposite wall. Apply two or three drops of lubricate on the face of the bearing and rod using the Super Lube Tube furnished with the game. Rotate the rod while pulling the rod toward you to evenly spread the lubricant on the rod. Perform the same operation on the opposite bearing face and rod. Repeat as needed.



## Step 8- Rotating the Bushings

- Once a year the bushings should be rotated 180 degrees to assure an even wear of the bushing surface. To accomplish this rotation remove the rods from the game and push a 7/8" socket head over the bushing fingers (Drawing – A). Push the bushing out of the hole and rotate the bushing 180 degrees (Drawing – B). Snap the bushing back into place and return the rod and man to the game.



333 Morton Street • Bay City, Michigan 48706

Tel: 989 893-1739 • Fax: 989 893-1809 • [www.gold-standard-games.com](http://www.gold-standard-games.com)